



Introduction to the ROR



List of contents

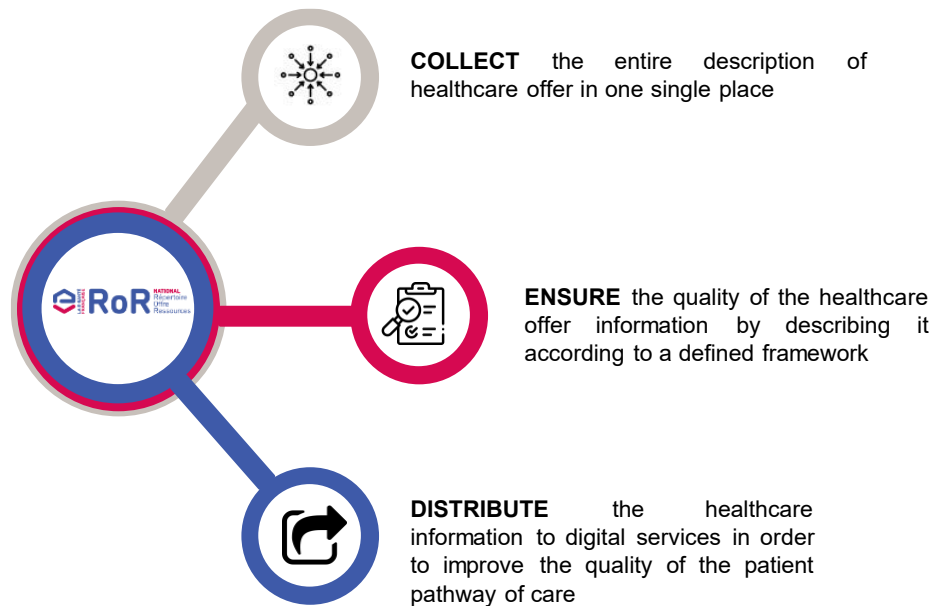
1. The must-know of the ROR
2. The stakeholders of the ROR
3. Use cases of the ROR
4. The ROR before and after 2023
5. Our next challenges

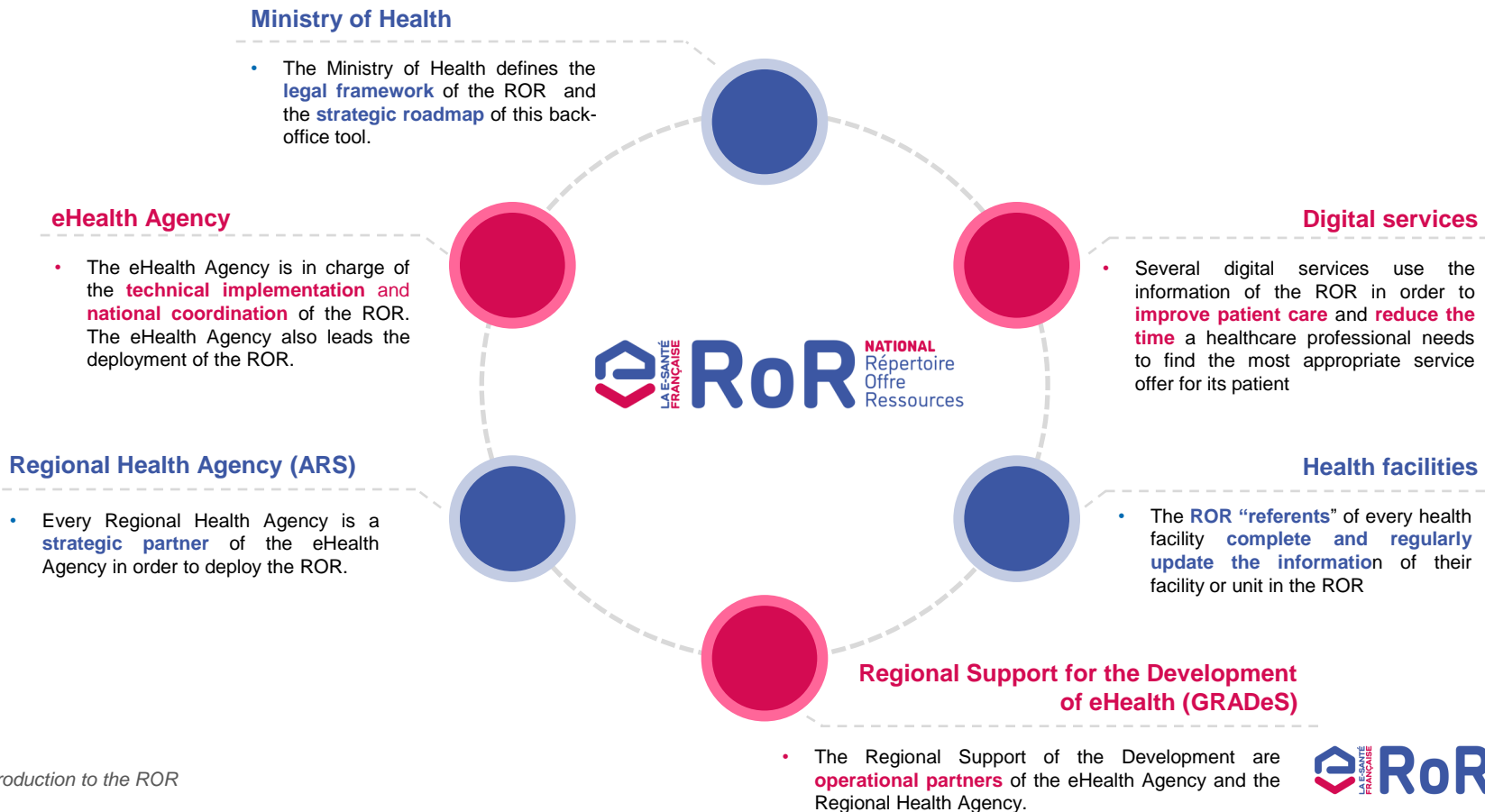
The Operational Directory of Resources (ROR) is a **data repository** which centralises the description of the care offer in health facilities, in care services for the elderly losing their autonomy or disabled patients, as well as office based practice.



The information that can be found in the ROR are for example: *description of the types of units in a hospital, specific hospital equipment, operational activities, capacity and place/bed availability in a health facility...*

- The ROR is a **pillar of the French eHealth doctrine**.
- Its goal is to be a **back-office tool** that feeds the digital services with healthcare information in order to improve the patient care.

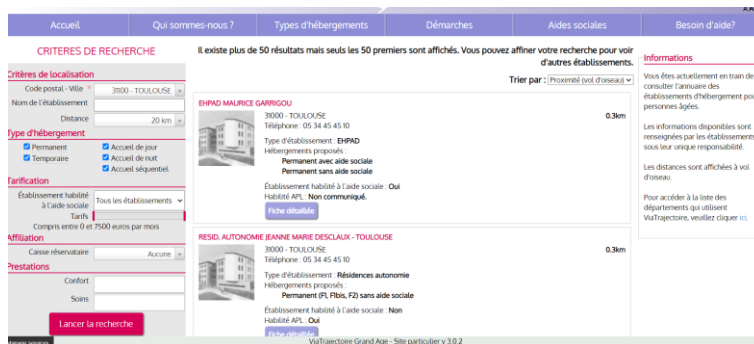




The information centralized in the ROR improves the patient pathway by feeding more than 31 digital services with healthcare information. To illustrate some use cases of the ROR:

Finding a nursing home for an elderly person with loss of autonomy

- If a doctor wants to find a nursing home for his patient, because the patient is slowly losing his autonomy, the doctor can complete a file on the digital service ViaTrajectoire in which he describes the medical information and the accommodation needs of his patients.
- Via Trajectoire then edits a list with the nursing homes that meet the criteria. This list is edited thanks to the information Via Trajectoire gets from the ROR.

The screenshot shows the 'CRITERES DE RECHERCHE' (Search Criteria) section on the left and search results on the right. The search criteria include:

- Critères de localisation:** Code postal: Ville (31000 - TOULOUSE), Nom de l'établissement, Distance (20 km).
- Type d'hébergement:** Permanent, Temporaire, Accueil de jour, Accueil de nuit, Accueil séquentiel.
- Tarifification:** Etablissement habilité à l'aide sociale (Tous les établissements), Tarifs (Compris entre 0 et 7500 euros par mois).
- Affiliation:** Caisse rétroactive (Aucune).
- Prestations:** Confort, Soins.

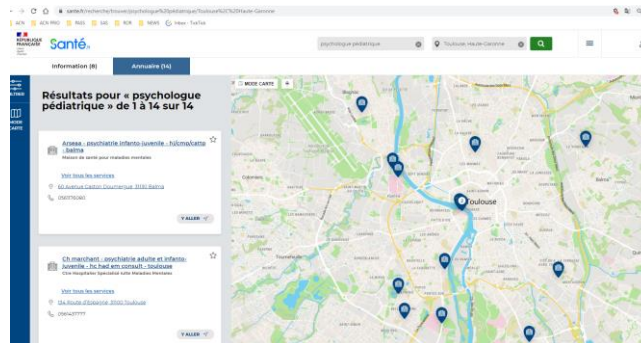
The search results show two establishments:

- EHPAD MAURICE GARRIGOU:** 31000 - TOULOUSE, Téléphone: 05 34 45 45 10, Type d'établissement: EHPAD, Hébergements proposés: Permanent avec aide sociale, Permanent sans aide sociale. Distance: 0.3km.
- RESID. AUTONOMIE JEANNE MARIE DESCLAUX - TOULOUSE:** 31000 - TOULOUSE, Téléphone: 05 34 45 45 10, Type d'établissement: Résidences autonomie, Hébergements proposés: Permanent (PL, Pbis, F2) sans aide sociale, Établissement habilité à l'aide sociale: Non, Habilité APL: Oui. Distance: 0.3km.

Additional information on the right states: 'Vous êtes actuellement en train de consulter l'annuaire des établissements d'hébergement pour personnes âgées. Les informations disponibles sont renseignées par les établissements sous leur seule responsabilité. Les distances sont affichées à vol d'oiseau. Pour accéder à la liste des départements qui utilisent ViaTrajectoire, veuillez cliquer ici.'

Looking for a pediatric psychologist in the neighbourhood

- If a father wants to find a pediatric psychologist for his child, he can enter his search criteria in [santé.fr](https://www.sante.fr) (a publicly-operated website which includes all the information on healthcare providers in France accessible for the general public).
- Santé.fr then edits a list of the psychologists that meet the criteria. The list is edited thanks to the information Santé.fr gets from the ROR.



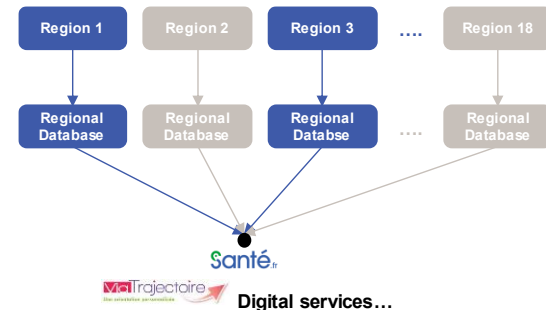
Follow-up of the bed availabilities in the different care units

- During the Covid-19 crisis, the ROR was especially used to monitor the bed availabilities in intensive care units. Every hospital regularly updated its bed availabilities which allowed the ROR to give a national overview of the available beds and as such redirect the Covid-19 patients to the hospitals which had available beds in intensive care units.



The ROR before 2023

- There are currently **2 software solutions for managing the operational directory of resources**: the ROR leSS solution and the ROR IR solution
- Every of the 18 region uses and deploys the **software solution of its choice**
- The GRADeS and ROR “referents” in the healthcare facilities complete their regional ROR with the healthcare information
- Every digital service that uses the information of the ROR **needs to connect to the 18 regional ROR databases** in order to have a national overview of the healthcare information



The ROR after 2023

- 1 modern and **unique software solution**
- **A single database ROR that gathers in a single point of access the healthcare information** and feeds all the digital services needing this information to improve the patient care
- A 5 years trajectory with a first step in 2023

