



Dr. Jacques LUCAS

President

ANS



Marc LOUTREL

*Head of Interoperability,
Innovation & International*

ANS



A word from our president



Dr. Jacques LUCAS

President





Moving towards participative health: putting the citizen at the center



Marc Loutrel

*Head of Interoperability,
Innovation & International*

Agence du Numérique en Santé (ANS)

The French eHealth Agency



Created in 2009, ANS has the responsibility of promoting the development of **shared information systems and digital technologies in the health field**. ANS contributes to the reinforcement of the efficiency of health policies and to the improvement of coordination, efficiency and quality of care. It holds a wide portfolio of projects organised around 3 missions. ANS is member of IHE int., HL7 int. and IHE France

Our 4 main roles:

- we **regulate** eHealth in France, improving digital performance through common regulatory and information-sharing standards;
- we **operate** major national e-programmes to make the public health service more efficient and cohesive;
- we **promote** and **valorize** all eHealth initiatives through stimulation, evaluation and support.

Back in 2018

5 major pillars to accelerate eHealth from governance, security & interoperability to digital services & innovation

5 MAIN ORIENTATIONS ²⁶

ACTIONS

1 ST ORIENTATION	2 ND ORIENTATION	3 RD ORIENTATION	4 TH ORIENTATION	5 TH ORIENTATION
STRENGTHENED GOVERNANCE IN DIGITAL HEALTH	ENHANCED SECURITY AND INTEROPERABILITY IN DIGITAL HEALTH	ACCELERATED ROLL-OUT OF REFERRAL DIGITAL SERVICES	EXTENDING NATIONALLY DIGITAL HEALTH PLATFORMS	SUPPORTING INNOVATION AND STIMULATING STAKEHOLDER INVOLVEMENT

Creation of committees including all parties in the ecosystem



patient associations



health professionals



structures



ehealth private companies



Regional structures



Post-covid Recovery & Resilience Plan

Accelerate eHealth roadmap through national initiatives and European convergence



Unprecedented investment effort in the French eHealth roadmap: 2B€ incl 600M for medico-social sector

Targeting key building blocks as Patient Summary, Secured messaging system, structured patient records etc

In an *aggressive* timeframe

- Medico-social
- Hospital *Public / Private*
- Lab
- Imaging
- Liberal doctors

President of the European Commission, **Ursula von der Leyen** stated:

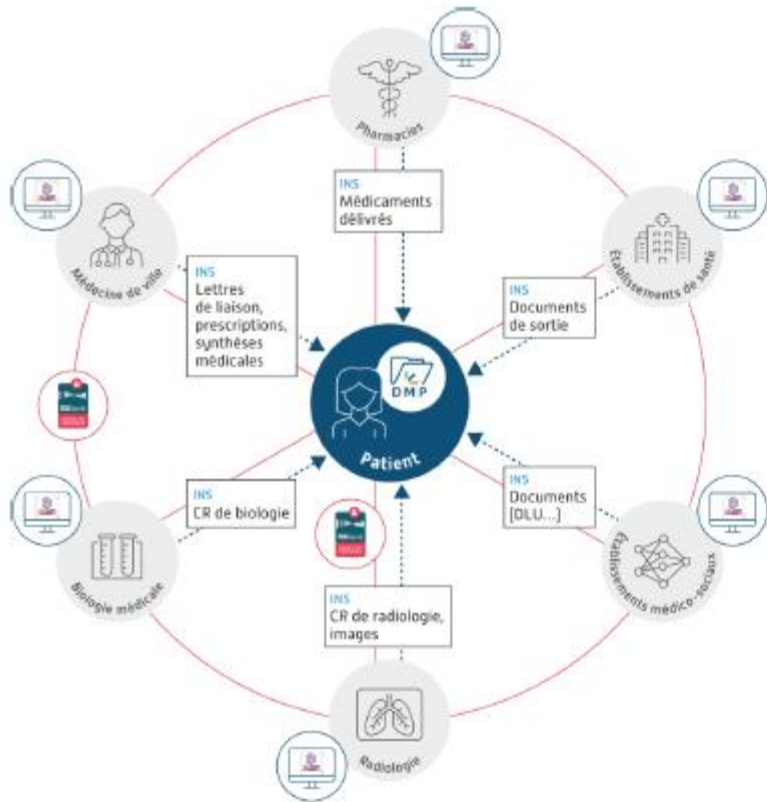
“Our aim is to protect the health of all European citizens. The coronavirus pandemic has highlighted the need for more coordination in the EU, more resilient health systems, and better preparation for future crises. We are changing the way we address cross-border health threats. Today, we start building a European Health Union, to protect citizens with high quality care in a crisis, and equip the Union and its Member States to prevent and manage health emergencies that affect the whole of Europe.”

EU4health Programme



Post-covid Recovery & Resilience Plan

Accelerate eHealth roadmap through national initiatives



Stockage des données de santé dans le Dossier Médical Partagé



Référencement de données avec un Identifiant National de Santé



Échanges via les messageries sécurisées de santé

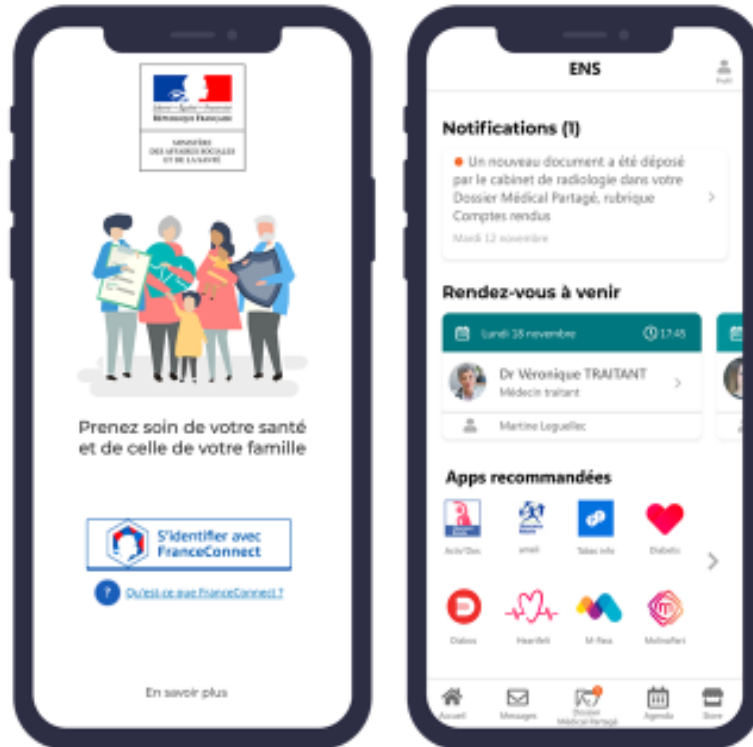


Identification électronique des professionnels de santé via Pro Santé Connect



MyHealthSpace at a glance

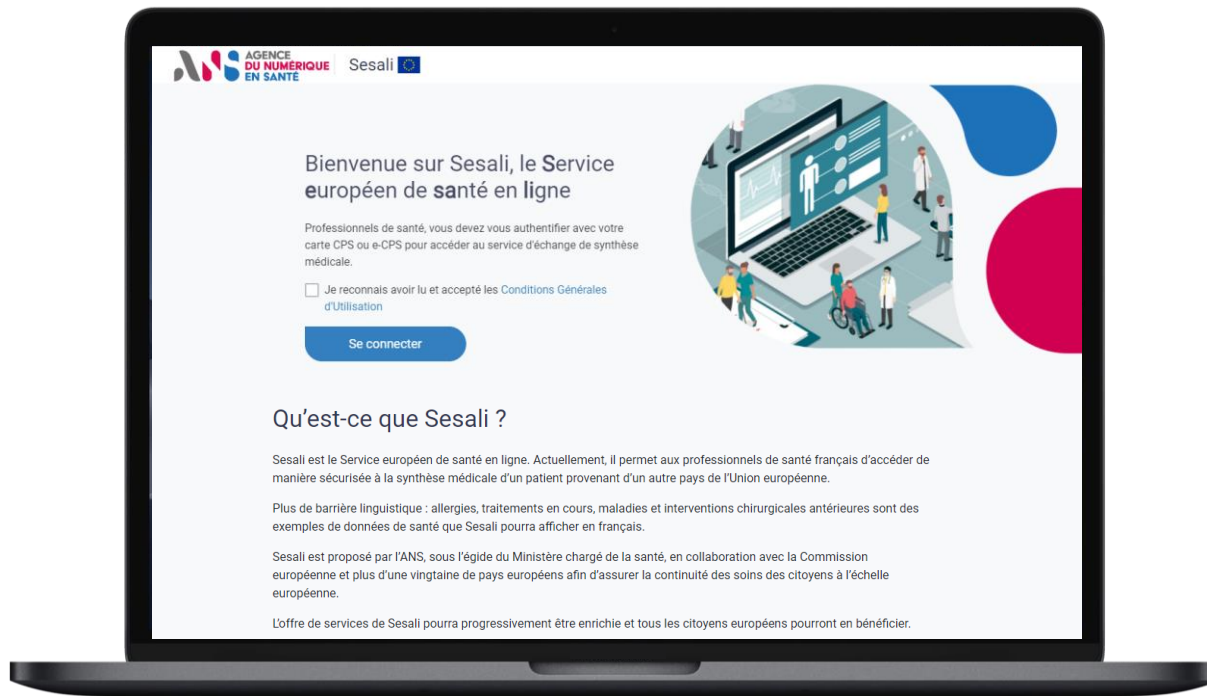
MyHealthSpace will foster patient access to health data



- A **secure health messaging** system to confidentially receive health documents from your GP: Get emails and documents, save documents, notifications, etc.
- An improved version of the **Shared Medical Record (DMP)** to store and share health documents: Prescriptions, treatments, test results, medical history, hospitalisation report, vaccination
- A **health calendar** to keep track of medical appointments, reminders and dates of key exams (check-ups, mammograms, vaccinations, etc.)
- A **catalogue of eHealth services** listed by the government, which are secure and compatible with monespacesanté.fr

French National Contact Point for eHealth (NCPeH)

Gateway for health professionals to access European patients' data



The French National Contact Point for eHealth (NCPeH), gateway for health professionals to access European patients' data, the step-by-step:

1. *Login in, via Pro Santé Connect (CPS smartcard or e-CPS);*
2. *Select the patient's country of residence;*
3. *Enter the patient's identity traits (it's the number used to identified the patient in its country of origin);*
4. *Confirm the patient's identity and consent to the PIN (Patient Information Notice, see below) ;*
5. *Consult the patient summary (access to medical data, translated and transcoded).*



My health @ EU
eHealth Digital Service Infrastructure
A service provided by the European Union